

UK's Leading Canvas  
Lodge Company



2021  
BROCHURE



# Safari Lodges



Celebrating over 12 years of service to the glamping industry, The Classic eXperience range of canvas lodges embodies everything we stand for as a high-quality supplier to the glamping industry.

Our Classic eXperience design is unmistakeable. Its effortless and iconic design, from the “no guy lines” to the beautifully crafted canvas inner tent, the Classic is the range that will always give your clients a “wow” eXperience

Complemented by our RAW interiors that create a feeling of solidity and safety for your clients using our tried and tested simple furniture designs. Providing exemplary levels of comfort and ease of use, the Raw interior delivers a truly brilliant eXperience for your guests.



Bringing our designs fully up to date with the Gotland and the Romanov, our eVent range models will create an iconic and unforgettable experience for your guests, and not just for events.

By creating a flexible approach our Event range can provide for an exciting club house or a top end restaurant or even the most luxurious Glamping accommodation available in the UK.

The eVent range is made from the same high-quality materials and continues our industry leading manufacturing techniques and finishes.

## TenCate Fabric

Renowned for being the best fabric on the market, we only use TenCate. It has been specifically developed for protection against sun, wind and rain. Not only this, the canvas is dirt-repellent, water-repellent and rot and mold-resistant. It is also increasingly environmentally friendly, without compromising on basic functionality, with ecological and sustainable printing techniques.



We have raised the bar with our range of brand new contemporary Retreat designs brings the very best in relaxed and laid-back eXperience's for your guests.

With super string and reliable roof structures and our trade mark crafted canvas inner tents, you can be sure of standing out from the crowd and setting you apart from your competitors

Complemented by our brand-new Urban furniture you can provide the internal space and design to ensure your guests fully enjoy their time away from the hustle and bustle of normal life, the Retreat range will ensure 5 star reviews every time.



A brand-new range of glamping experience tents, the Adventure range is designed to withstand the very hardest of weather conditions where ever you are in the world.

Designed and constructed with our usual attention to detail and quality to inspire your guests. You can be sure they will have an unforgettable experience regardless of the weather. Able to withstand snowfalls over night while your guests snuggle around a cosy fire, this will be a memorable experience for everyone.

## Strength

Our ergonomically designed Safari Lodges have no guy lines as they use lateral tension to secure the roof to the frame, and the frame to the base, creating the most robust construction. Due to this unique design this means there is no need to take any of our lodges down at any point during the year, allowing a full years income stream.

# About Clear Sky

Clear Sky started as a dream, with a small glamping site at CEO Mark Scott’s farm in Kent. Mark had been working in the travel industry for over 10 years at that stage, and was quickly realising that glamping was a growing market where customers needs & expectations weren’t being met.

Extensive research found that by bringing together the very best manufacturers in Europe, the highest quality lodges could be offered at prices and with delivery times much more preferable to what was available in the UK, without compromising quality. 10 years on from that first glamping site in Kent, we are very proud to be the largest supplier of Safari Lodges in the UK and Ireland with over 80% of the market.

## FSC Certification

All the wood used for our Safari Lodges has been FSC certified, allowing it to be identified as being made with materials from well-managed forests and/or recycled sources. The FSC certification is considered the “gold standard” designation for wood harvested from forests that are responsibly managed, socially beneficial, environmentally conscious, & economically viable.

## Clear Sky Services

- ✓ Bespoke built lodges
- ✓ Simple supply of lodge, if required
- ✓ Turnkey service, if required
- ✓ Plumbing and Electrical options
- ✓ Warranty and maintenance packages
- ✓ Complimentary site visits and consultancy included





# Woody Safari Lodge

When considering your options in the safari lodge, many of our clients work hard to maximise the space in order to provide the best client experience possible. The Plus Range makes that even easier at 5.4m wide. By providing the additional width, we can design much more exciting layouts, making bedrooms truly

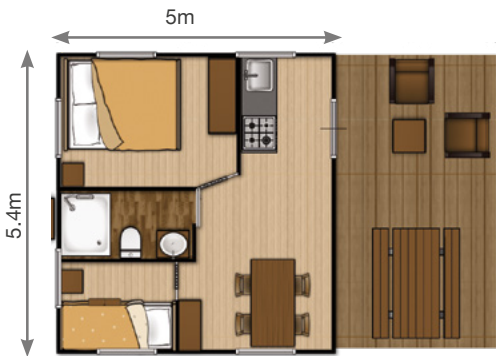
separate with individual entrances from a central corridor, en-suite facilities, open plan living areas and integrated kitchens. The lodge comes in a range of colours with colour co-ordinated connectors, fully opening large windows and a rear zip as standard.



## The Woody 1

SKU: WWP1

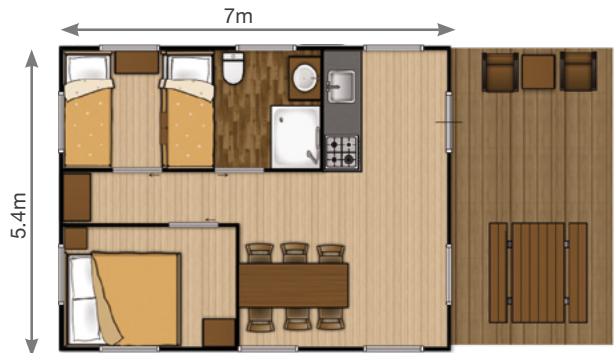
- ✓ Total surface: 43 m<sup>2</sup>
- ✓ Inner lodge dimension: 5x5.4m (27m<sup>2</sup>)
- ✓ Guest: Sleeps 4-5
- ✓ Bedrooms: 2
- ✓ Bathroom: Yes
- ✓ Kitchen: Yes



## The Woody 2

SKU: WWP2

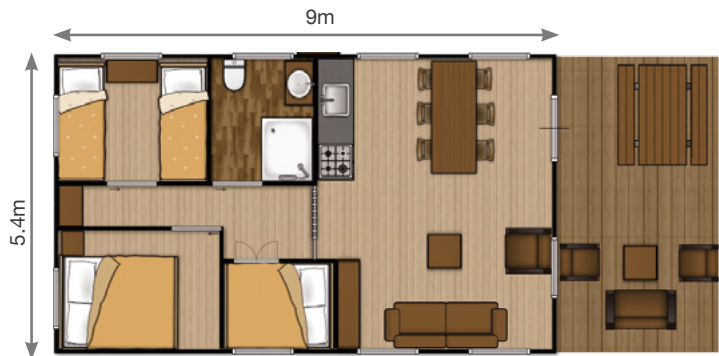
- ✓ Total surface: 54m<sup>2</sup>
- ✓ Inner lodge dimension: 7x5.4m (38m<sup>2</sup>)
- ✓ Guest: Sleeps 5-6
- ✓ Bedrooms: 2
- ✓ Bathroom: Yes
- ✓ Kitchen: Yes



## The Woody 3

SKU: WWP3

- ✓ Total surface: 65m<sup>2</sup>
- ✓ Inner lodge dimension: 9x5.4m (49m<sup>2</sup>)
- ✓ Guest: Sleeps 6-8
- ✓ Bedrooms: 2
- ✓ Cabin Bed: 2
- ✓ Bathroom: Yes
- ✓ Kitchen: Yes



Woody Plus Safari Lodge Dimensions		
Code	Inner Dimension	Outer Dimension
WWP1	5.4 x 5m	6.5m x 7m
WWP2	5.4 x 7m	6.5m x 9m
WWP3	5.4 x 9m	6.5m x 11m



# Comet Safari Lodge



This brand new lodge has the same strength & design of our larger lodges & can be left up all year round, so reducing your maintenance and storage costs.

With two large windows to the front the lodge is light & airy & brings a new level of quality and luxury to the ready lodge market. With no guy lines, it will fit directly

onto a standard pitch and still leave space for your guests to park their cars.

With night rates above £100 and a high level of repeat guests, these lodges will help bring new people to your park and increase the sales opportunities for lodges and statics

## Comet Safari Lodge

SKU: CSL1

- ✓ Inner lodge dimension: 4.5x4.5m (20.3m<sup>2</sup>)
- ✓ Veranda: 4.5x2.1m (9.5m<sup>2</sup>)
- ✓ Total surface: 4.5x6.6m (29.8m<sup>2</sup>)
- ✓ Footprint: 6.4x9.0m (57.6m<sup>2</sup>)
- ✓ Guests: 2 to 5
- ✓ Bedrooms: 2
- ✓ Bathroom: No
- ✓ Kitchen: Yes

Comet Safari Lodge Dimensions		
Inner Lodge	20.3m <sup>2</sup>	4.5mx4.5m
Veranda	9.5m <sup>2</sup>	4.5mx2.1m
Total Surface	29.8m <sup>2</sup>	4.5mx6.6m
Footprint	57.6m <sup>2</sup>	6.4mx9.0m





# Club Lodge

Our newest and most exclusive is the Club Lodge, the perfect Safari Lodge with a spacious veranda and an internal space. There are no crown posts in the interior of the inner lodge which makes the whole space available for your own interior and creative designs.

The wooden frame construction has a sturdy and stylish look and by using natural colours the Club Lodge will fit into any surrounding. The Club Lodge is available in 2 different models with capacity for 4 to 8 people. The Club Lodge has the added bonus of a full rollup section and bar area – perfect for those long summer evenings.



## Club Lodge - Small

SKU: LL40

- ✓ Total surface area: 55m<sup>2</sup>
- ✓ Inner lodge dimensions: 7.5x5.4m (40m<sup>2</sup>)
- ✓ Includes a 15m<sup>2</sup> veranda
- ✓ Guests: 4 to 5
- ✓ Bedrooms: 2
- ✓ Bathroom: Yes
- ✓ Kitchen: Yes



## Club Lodge - Large

SKU: LL49

- ✓ Total surface area: 64m<sup>2</sup>
- ✓ Inner lodge dimensions: 9x5.4 m (49m<sup>2</sup>)
- ✓ Includes a 15m<sup>2</sup> veranda
- ✓ Guests: 6 to 8
- ✓ Bedrooms: 2
- ✓ Bathroom: Yes
- ✓ Kitchen: Yes



### Club Lodge Sizes

Code	Specification	Dimensions
LLR40	Small Lodge - Residential	5.4m x 7.5m
LLR49	Large Lodge - Residential	5.4m x 9.0m
LL40	Small Lodge - Campshield	5.4m x 7.5m
LL49	Large Lodge - Campshield	5.4m x 9.0m



# Grand Safari Lodge

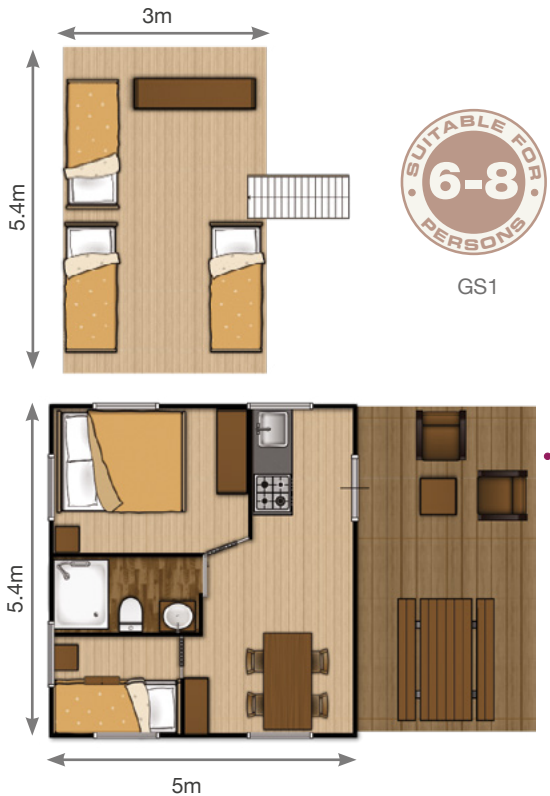
After the success of our Woody Plus, it was a natural step to extend our range to include a second storey option.

The ground floor of the Grand Safari Lodge has the space to contain a complete kitchen, a dining area and a host of storage possibilities. You can find a separate master bedroom and the spacious bathroom holds a luxury shower, wash-basin and toilet.

The second floor does not take away the feeling of being in a lodge, climbing up the wooden stairs you will find a canvas roof providing a cosy and snug sleeping area with an upper fire escape hatch with a fixed rope ladder for emergencies.

## Upper Fire Escape Hatch

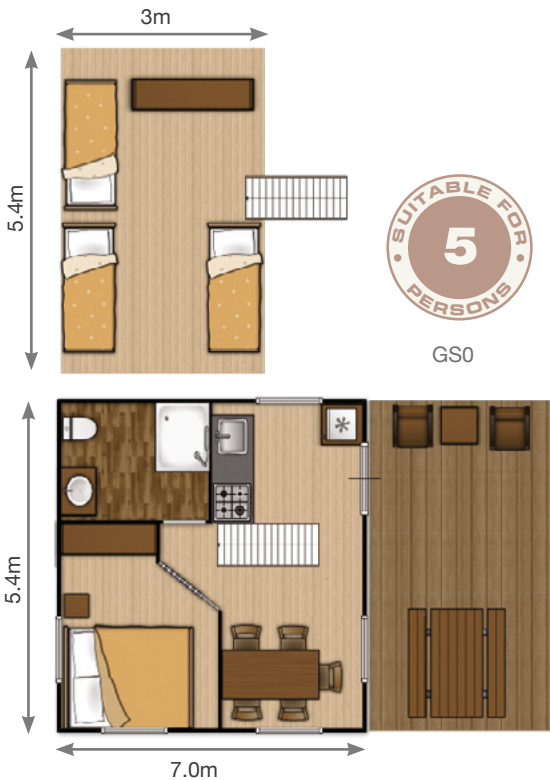
A fixed rope ladder on the 2nd floor provides an escape route for emergencies.



## Grand Safari Lodge

SKU: GS1

- ✓ Total surface area: 64m<sup>2</sup>
- ✓ Inner lodge dimensions: 7x5.4m (38m<sup>2</sup>)
- ✓ Includes a 15m<sup>2</sup> veranda
- ✓ Guests: 6 to 8
- ✓ Bedrooms: 2
- ✓ Bathroom: Yes
- ✓ Kitchen: Yes



## Grand Safari Lodge

SKU: GS2

- ✓ Total surface area: 64m<sup>2</sup>
- ✓ Inner lodge dimensions: 9x5.4m (49m<sup>2</sup>)
- ✓ Includes a 15m<sup>2</sup> veranda
- ✓ Guests: 7 to 8
- ✓ Bedrooms: 3
- ✓ Bathroom: Yes
- ✓ Kitchen: Yes

## Grand Safari Lodge

SKU: GS0

- ✓ Total surface area: 64m<sup>2</sup>
- ✓ Inner lodge dimensions: 5x5.4m (27m<sup>2</sup>)
- ✓ Includes a 15m<sup>2</sup> veranda
- ✓ Guests: 5
- ✓ Bedrooms: 2
- ✓ Bathroom: Yes
- ✓ Kitchen: Yes

Grand Safari Lodge Sizes	
Code	Inner Dimensions
GS 0	5.4 x 5m
GS 1	5.4 x 7m
GS 2	5.4 x 9m



# Safari Pod



By addressing the problems with a standard wood pod and at a much lower price, the Safari Pod gives your clients the experience of glamping with full height standing. In a small and compact unit you can maximize the income from your site without the capital outlay associated with our larger and more permanent lodges.

Including a sturdy wood base and a large 1.2m x 2.8m covered porch area, your clients can fully enjoy a cold glass of wine watching the sun going down.

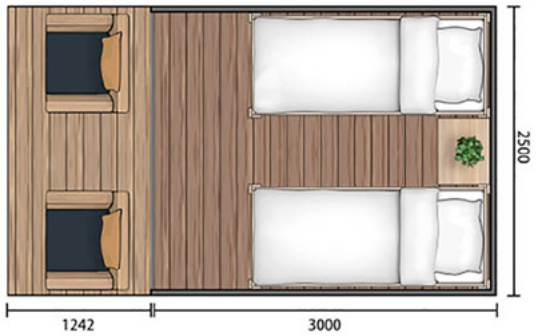
## Safari Pod

SKU: SP1

- ✓ Total surface: 10.5m<sup>2</sup>
- ✓ Inner lodge dimension: 7.5m<sup>2</sup>
- ✓ Guest: Sleeps 2
- ✓ Veranda: 3m<sup>2</sup>
- ✓ Bathroom: No

### Safari Pod Dimensions

Inner Lodge	7.5m <sup>2</sup>	2.5mx3m
Veranda	3m <sup>2</sup>	2.5mx1.2m
Total Surface	10.5m <sup>2</sup>	2.5mx4.2m
Footprint	20m <sup>2</sup>	3.9mx5.2m





# Luxury Retreat Lodge



The Luxury Retreat Lodge stands out with its distinctive double roof, which provides extra ventilation and is perfect for warmer climates. You can even add air conditioning for extra comfort. To create the ultimate outdoor feeling, the front side can be opened completely. After a long day of exploring, your guests can relax on the spacious veranda and watch the sun go down.

The Luxury Retreat Lodge offers your guests a home away from home, complete with fully equipped kitchen, separate toilet, bathroom, and two bedrooms. This lodge is suitable for two to five people.

## Luxury Retreat Lodge

SKU: LRL1

- ✓ Double-ventilated roof with superb ventilation
- ✓ Symmetrical 100 mm frame design for better storm resistance
- ✓ Includes a 15m<sup>2</sup> veranda
- ✓ Guests: 2-5
- ✓ Bedrooms: 2
- ✓ Bathroom: Yes
- ✓ Kitchen: Yes

### Retreat Lodge Dimensions

Inner Lodge	39.7m <sup>2</sup>	7.5mx5.3m
Veranda	15m <sup>2</sup>	
Total Surface	55m <sup>2</sup>	





# Family Retreat Lodge



Clear Sky's new Family Retreat canvas lodge stands out with its stylish and contemporary design and new advanced roof construction. The Family Retreat gives guests the luxury experience they expect from a Deluxe canvas lodge.

The Family Retreat is Clear Sky's second canvas lodge to have a modular system; it is the elongated version of the Retreat model. It allows clients to choose from different kinds of wall panels (i.e. closed, door or window panels) and wall materials (i.e. wood, canvas), with the flexibility to arrange the space depending on their needs. This enables clients to choose the look and feel which best matches their holiday park or resort.

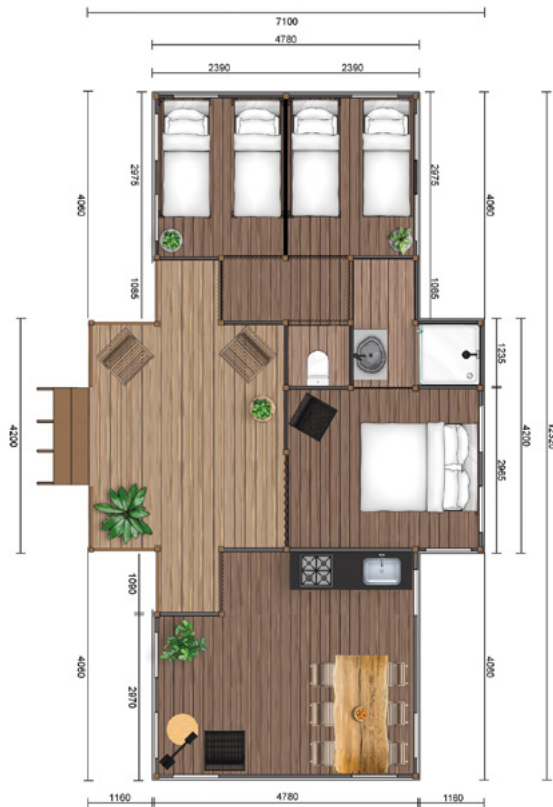
Clear Sky designed the Family Retreat with a spacious inner tent of 51m<sup>2</sup> giving guests a lot of living space with that the ultimate feeling of luxury camping. The Family Retreat is built with sturdy hardwood masts for a unique design and increased strength. With this new roof construction, the ridge height is 5.2 metres. The black corner tensioners ensure the roof has a perfectly reliable and secure fit. Moreover, they are a feast for the eyes and they set the trend for a new era in safari tents and glamping lodges. The new frame and roof construction make the Family Retreat withstand the toughest conditions, including wind gusts of force 10 on the Beaufort scale.

## Family Retreat Lodge

SKU: FRL1

- ✓ Includes a 18m<sup>2</sup> veranda
- ✓ Guests: 2-6
- ✓ Bedrooms: 3
- ✓ Bathroom: Yes
- ✓ Kitchen: Yes

Retreat Lodge Dimensions	
Inner Lodge	51m <sup>2</sup>
Veranda	18m <sup>2</sup>
Total Surface	69m <sup>2</sup>





# Tree Pod



Looking for a compact but spacious lodge with a view for just that little bit of extra comfort? Look no further! Our Tree Pod glamping lodge is ideal for people who don't normally "do" camping – and also for those that do.

The Tree Pod has two floors, which means you can provide your guests a spacious living area. There is a kitchen and dining table on the ground floor, or the space can be configured as a compact kitchen or a bathroom. On the first floor, you will find a separate bedroom with a spacious veranda, where your guests can relax and simply enjoy the view.

## Tree Pod

SKU: TP1

- ✓ The Tree Pod offers a lot of space on a small footprint due to the extra floor
- ✓ Various efficient layouts possible
- ✓ Spacious, yet compact – ideal for sites with smaller spaces
- ✓ Guests can make the most of your fantastic views from the upper floor
- ✓ Guests: 2
- ✓ Bedrooms: 1
- ✓ Bathroom: Optional
- ✓ Kitchen: Yes

### Tree Pod Lodge Dimensions

Inner Lodge Ground Floor	7.5m <sup>2</sup>
Veranda Ground Floor	22.5m <sup>2</sup>
Inner Lodge First Floor	7.5m <sup>2</sup>
Veranda First Floor	6.5m <sup>2</sup>





# Gotland Safari Lodge



This luxurious lodge stands out for its design, robust wooden frame and nautical details. It offers impressive glamping accommodation for guests looking for a unique stay in the great outdoors.

The Gotland is our most stylish glamping lodge with room for up to four people. It has a veranda, a fully equipped kitchen, two spacious bedrooms with box-spring beds and each room comes with a bathroom with



Event  
xPerience

shower and toilet. It's perfect for families and friends who want to enjoy outdoor living in luxury.

The Gotland can be equipped with air-conditioning, to give your guests extra comfort & you can add a swing to the veranda, so your guests can relax with a book & a drink.

With all the comforts of home, the Gotland takes glamping to a whole new level!

## Gotland Lodge

SKU: GL1

- ✓ Unique shape with nautical elements to give your resort an unique look and feel
- ✓ Spacious outdoor living, designed for the warmer seasons
- ✓ Fully equipped kitchen including an oven
- ✓ Two separate master bedrooms
- ✓ Bedrooms: 2
- ✓ Bathroom: 2
- ✓ Kitchen: Yes
- ✓ Veranda: Yes

### Gotland Lodge Dimensions

Inner Lodge	70m <sup>2</sup>
Veranda	32m <sup>2</sup>
Total Surface	102m <sup>2</sup>
Footprint	267m <sup>2</sup>



safaritents.net



0333 241 2660



# Romanov Safari Lodge



Event  
xPerience

The Romanovs were renowned for their decadence & our exclusive Romanov lodge doesn't disappoint. It's the camping equivalent of a five star hotel, but closer to nature.

It's ideal for families looking for a very special experience and comes complete with a luxury bathroom, fully equipped kitchen and two bedrooms.

And after a full day of activities, one of the two verandas is just the perfect spot for your guests to relax.

With all the comforts of home, and a unique, nautical and imposing look, the Romanov Residence takes glamping to a whole new level! The Romanov Residence will be offered in the contemporary style.

## Romanov Lodge

SKU: RL1

- ✓ Impressive design and size to offer your guests something unique
- ✓ Luxury & space to create the feeling of a five-star boutique hotel
- ✓ Perfect for families with older children or a large group of friends
- ✓ Three bedrooms and two separate bathrooms for extra comfort
- ✓ Bedrooms: 3
- ✓ Bathrooms: 2
- ✓ Kitchen: Yes
- ✓ Veranda: Yes

### Romanov Lodge Dimensions

Inner Lodge Main Floor	70.49m <sup>2</sup>
Veranda Main Floor	56.89m <sup>2</sup>
Master Bedroom (upper deck)	20.93m <sup>2</sup>
Veranda Upper Deck	9.70m <sup>2</sup>
Total Surface	158.01m <sup>2</sup>



safaritents.net



0333 241 2660



# After Care & Maintenance

Clear Sky provides professional maintenance solutions including preventive planned maintenance contracts, operating from a UK based network of service professionals.

While we design and install every canvas lodge to thrive year after year, a big part of ensuring that happens is to undertake a visual inspection and perform some simple tasks and replacement parts once or twice a year. Summarising each visit, we offer a report detailing the overall condition and recommendations for future care and maintenance .



### Standard Maintenance Package

- ✓ Annual site visit & visual check
- ✓ Winterisation advice
- ✓ Tensioning of black straps
- ✓ Check and adjust Velcro straps
- ✓ Check zips and treat if required
- ✓ Check ratchets and tighten roof
- ✓ Check all skirt fixings
- ✓ Check holding straps at front of lodge
- ✓ Check all grey straps
- ✓ 10% discount off all parts and labour for remedial works.

**£195**+VAT  
per lodge Per Year

**30% discount**   **40% discount**  
for further 2-3 lodges   for further 4+ Lodges



### Premium Maintenance Package

- ✓ Six monthly site visits & visual check
- ✓ Winterisation advice
- ✓ Tensioning of black straps
- ✓ Check and adjust Velcro straps
- ✓ Check zips and treat if required
- ✓ Check ratchets and tighten roof
- ✓ Check all skirt fixings
- ✓ Check holding straps at front of lodge
- ✓ Check all grey straps
- ✓ Treatment of poles as required
- ✓ 25% discount off all parts and labour for remedial works

**£350**+VAT  
per lodge Per Year

**30% discount**   **40% discount**  
for further 2-3 Lodges   for further 4+ Lodges

# Electrical Services

To ensure you can get your entire glamping lodge up and running as soon as possible we offer a full electrical installation service as part of our one stop source for all your glamping needs and requirements.

- Our electrical service is fully certified and is offered at a fixed price
- Call us for more information

# Plumbing Installation Services

Clear Sky has always prided ourselves in providing the highest quality of service while making sure you have just one point of supply for your Glamping dream.

By partnering with highly qualified and professional plumbers we are able to ensure your glamping lodge is

fully ready to start renting out as soon as we have completed the full installation.

All our plumbing people are fully trained and gas registered



### Gold Plumbing Installation

- ✓ LPG gas boiler supply, twin gas regulator,
- ✓ Pipework & installation, hot & cold appliances.
- ✓ Installation of shower walls, shower unit, toilet & sink connection to waste & soil pipes.



### Silver Plumbing Installation

- ✓ LPG gas boiler supply, twin gas regulator,
- ✓ Pipework & installation, hot & cold appliances.
- ✓ Plumbing for a roll top bath, toilet & sink; includes connection to waste & soil pipes.



### Bronze Plumbing Installation

- ✓ LPG gas boiler supply, twin gas regulator,
- ✓ Pipework & installation to the hot & cold appliances inside the lodge.







The Clock House, Mount Pleasant Farm,  
Peckham Bush, Kent TN12 5NE

Telephone: 0333 241 2660

Email: [sales@safaritents.net](mailto:sales@safaritents.net)

As leaders in design, manufacture and support of safari lodges, Clear Sky carries out continuous research and development to maintain their lead at the forefront of the glamping industry in the UK. As well as the Safari Lodges featured in this brochure, we also offer bespoke designs, larger sizes and beach lodges. To support this we carry out regular customer surveys to understand needs and requirements of both operators and customers. This keeps our products both fresh and relevant and allows us to share information across the industry.

Please email us at [sales@safaritents.net](mailto:sales@safaritents.net) to sign up for our regular newsletters  
to keep up to date with the latest innovations.